

Comprehensive and sustainable Management of Business Models



KnowEnterprise®/Business

Overview



KnowEnterprise®/Business is a component of the KnowEnterprise® tool suite that provides comprehensive support for Model Driven Enterprise Engineering™. KnowEnterprise gives the user the ability to capture and manage enterprise-wide information ranging from business strategies to the IT architecture. KnowEnterprise/Business supports the business audience in enterprise modelling and organizes information into five fully integrated views to represent business information that is essential to an enterprise:

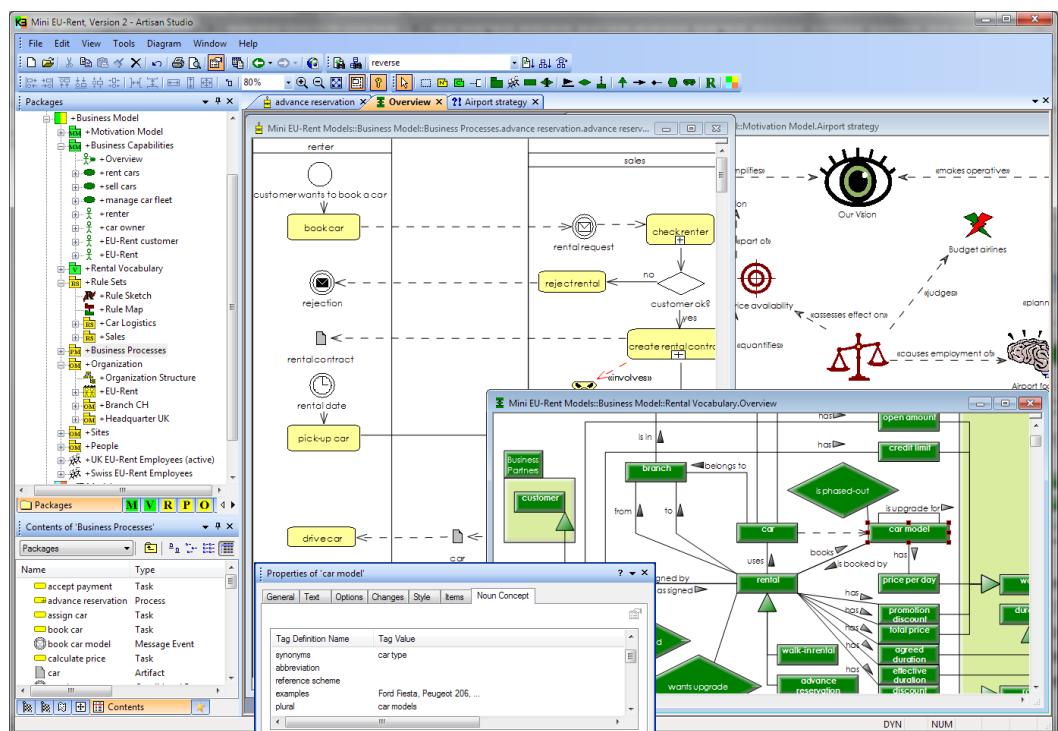
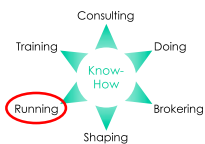
Business Motivation – Strategy Model:

- **Motivation View:** Defines goals, influencers, strategies, and capabilities of the business
- **Vocabulary View:** Defines a consistent, multi-lingual enterprise terminology

Business Design – Operational Model:

- **Rules View:** Defines directives and business rules in an unambiguous form
- **Process View:** Defines business process based on business rules
- **Organization View:** Defines organizational structures and responsibilities

These views are complemented by the orthogonal management views **Projects**, **Documents**, **Transformations**, and **Quality**. This holistic approach creates transparency, as it provides traceability from any information back to its original business motivation.



KnowEnterprise/Business is based on the OMG specifications "Business Motivation Model" (BMM), "Business Process Modeling Notation" (BPMN), "Semantics of Business Vocabulary and Business Rules" (SBVR), and "Organization Structure Metamodel" (OSM).

Functionality of KnowEnterprise®/Business

Motivation View	<p>Elaboration and documentation of an enterprise's strategy in graphical form:</p> <ul style="list-style-type: none"> • Definition of the enterprise's vision as well as qualitative and quantitative goals • Formulation of the enterprise's mission as well as its strategies and tactics • Identification and assessment of influencers on the enterprise and its risks • Identification of required resources and business capabilities 									
Vocabulary View	<p>Representation of an enterprise vocabulary to avoid misunderstandings:</p> <ul style="list-style-type: none"> • Definition of the meaning of concepts with synonyms, owner, source, etc. • Identification of communities and community-specific terms for concepts (including comprehensive support for multiple languages) • Support for reuse of multiple vocabularies, including import and export • Comprehensive reuse of vocabularies across all other models 									
Rules View	<p>Formulation of directives in the form of business rules:</p> <ul style="list-style-type: none"> • Formulation of structural and operative business rules with volatility and enforcement based on the enterprise vocabulary • Support for multiple rule languages (SBVR, RuleSpeak®, KGRL) in multiple natural languages • Organization of business rules into Rule Sets • Automatic dependency analysis with graphical representation (Rule Map) 									
Process View	<p>Visualization of business processes:</p> <ul style="list-style-type: none"> • Definition of business process maps and overview graphics • Definition of business processes and workflows using BPMN • Integration of business processes with rules from the Rules View • Specification of IT-support for business processes 									
Organisation View	<p>Documentation of organizational structures:</p> <ul style="list-style-type: none"> • Definition of organisations, organisational units, positions and roles • Identification and documentation of individual people • Specification of responsibilities by assigning business processes to organisational units and roles • Staffing of organisational units, positions and roles with people 									
General	<p>All views are based on an integrated repository with the following characteristics:</p> <ul style="list-style-type: none"> • Intelligent document generation to produce concise and readable documents in a flexible but fully automated way • Multi-user support with access authorization and multi-server/multi-client architecture for distributed work • Interactive usage and summary reports as well as dependency analysis • Versioning, sharing, splitting, differencing and merging of models and model-elements with fine-grained automatic change logging 									
Requirements	PTC Integrity Modeler® V8.2 or higher									
Contact	<table border="0"> <tr> <td>KnowGravity Inc.</td> <td>Phone</td> <td>+41 44 43 42 000</td> </tr> <tr> <td>Hohlstrasse 534</td> <td>Internet</td> <td>www.knowgravity.com</td> </tr> <tr> <td>CH-8048 Zürich</td> <td>E-Mail</td> <td>info@knowgravity.com</td> </tr> </table>	KnowGravity Inc.	Phone	+41 44 43 42 000	Hohlstrasse 534	Internet	www.knowgravity.com	CH-8048 Zürich	E-Mail	info@knowgravity.com
KnowGravity Inc.	Phone	+41 44 43 42 000								
Hohlstrasse 534	Internet	www.knowgravity.com								
CH-8048 Zürich	E-Mail	info@knowgravity.com								

