

Comprehensive and sustainable Management of IT-Systems



KnowEnterprise®/IT

Overview



KnowEnterprise®/IT is a component of the KnowEnterprise® tool suite that provides comprehensive support for Model Driven Enterprise Engineering™. KnowEnterprise gives the user the ability to capture and manage enterprise-wide information ranging from business strategies to the IT architecture. KnowEnterprise/IT supports IT departments in comprehensive modelling enterprise-level applications as well as complex technical systems by providing five fully integrated views:

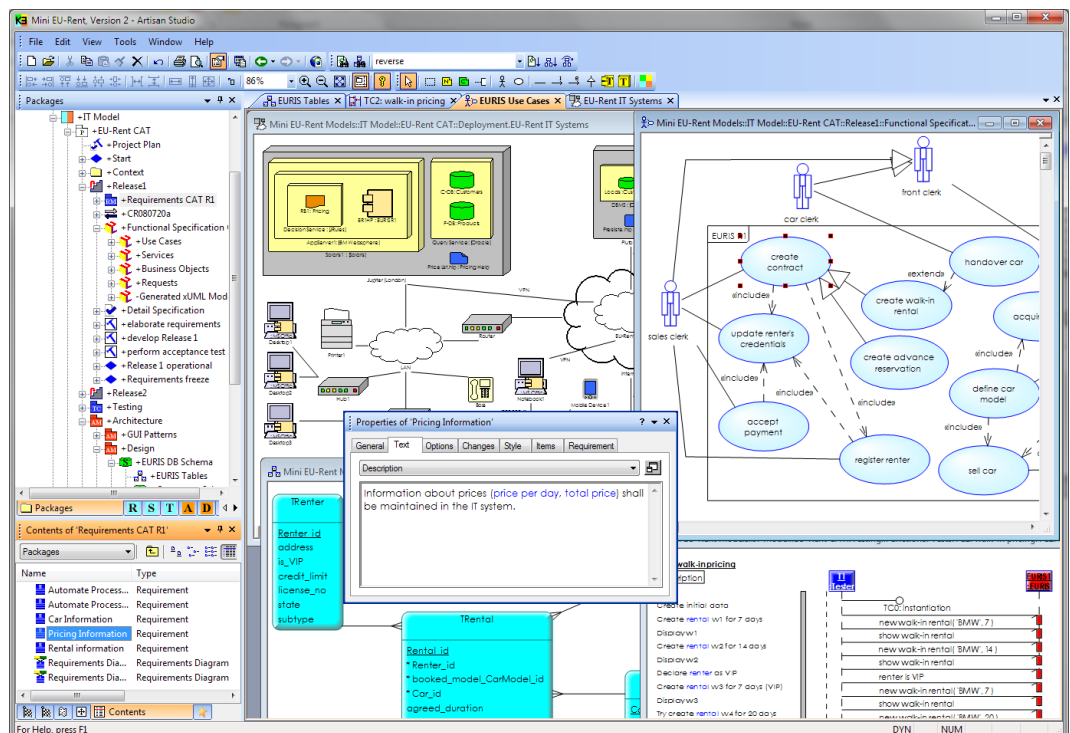
IT-Requirements – IT Support Model:

- **Requirements View:** Defines IT requirements allocated to projects and releases
- **Specification View:** Specifies implementation-independent, executable specifications
- **Test View:** Specifies test cases and test components

IT-Solutions – Technology Model:

- **Architecture View:** Describes architectures and solutions for IT systems
- **Deployment View:** Documents operational aspects of the running IT infrastructure

These views are complemented by the orthogonal management views **Projects**, **Documents**, **Transformations**, and **Quality**. This holistic approach supports the whole lifecycle of IT systems from their initial identification from business needs down to their maintenance.



KnowEnterprise/IT is based on the OMG specifications "Unified Modeling Language" (UML®), "executable UML" (xUML), "Systems Modeling Language" (SysML), "UML Testing Profile (UTP)" and "Model Driven Architecture" (MDA®).

Functionality of KnowEnterprise®/IT

Requirements View	<p>Elaboration and documentation of IT requirements:</p> <ul style="list-style-type: none"> • Definition of functional, non-functional and project requirements • Tracing of requirements to their sources and implementation elements by means of requirements diagrams • Management of issues and change requests 									
Specification View	<p>Precise representation of functional requirements by means of executable specifications:</p> <ul style="list-style-type: none"> • Modelling of use cases and domain objects • Modelling of services and logical interfaces • Specification of complex behaviour and complex rules • Executable specifications based on xUML with integrated GUI generation • Simulation of time-dependent behaviour by means of time simulation • Support of automatic regression tests on executable specifications 									
Test View	<p>Specification of functional and non-functional tests:</p> <ul style="list-style-type: none"> • Modelling of test cases based on an extension of the UML Testing Profile • Specification and management of complex test data including online consistency checking • Modelling of complex test environment and test configurations 									
Architecture View	<p>Definition of technical target architectures:</p> <ul style="list-style-type: none"> • Documentation von design patterns and other implementation-aspects • Definition of component-based architectures and systems • Modelling of specific technical implementations and database schemata • Modelling technical artefacts such as configuration files, rulebases, etc. 									
Deployment View	<p>Description of operational aspects of the enterprise-IT:</p> <ul style="list-style-type: none"> • Modelling of physical nodes (server, workstations, PDAs, etc.) • Modelling of execution platforms like operating systems, application servers, database and workflow management systems or rule engines • Documentation of networks and their configurations • Modelling of data- and invocation-interfaces • Modelling of licenses, configurations as well as database- and rulebase-instances 									
General	<p>All views are based on an integrated repository with the following characteristics:</p> <ul style="list-style-type: none"> • Intelligent document generation to produce concise and readable documents in a flexible but fully automated way • Multi-user support with access authorization and multi-server/multi-client architecture for distributed work • Interactive usage and summary reports as well as dependency analysis • Versioning, sharing, splitting, differencing and merging of models and model-elements with fine-grained automatic change logging 									
Requirements	PTC Integrity Modeler® V8.2 or higher									
Contact	<table border="0"> <tr> <td>KnowGravity Inc.</td> <td>Phone</td> <td>+41 44 43 42 000</td> </tr> <tr> <td>Hohlstrasse 534</td> <td>Internet</td> <td>www.knowgravity.com</td> </tr> <tr> <td>CH-8048 Zürich</td> <td>E-Mail</td> <td>info@knowgravity.com</td> </tr> </table>	KnowGravity Inc.	Phone	+41 44 43 42 000	Hohlstrasse 534	Internet	www.knowgravity.com	CH-8048 Zürich	E-Mail	info@knowgravity.com
KnowGravity Inc.	Phone	+41 44 43 42 000								
Hohlstrasse 534	Internet	www.knowgravity.com								
CH-8048 Zürich	E-Mail	info@knowgravity.com								

